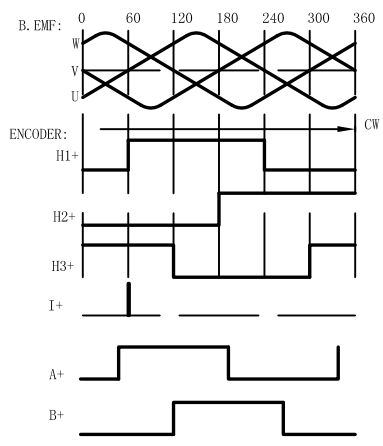
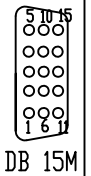


Front shaft CW rotate
View to front shaft



Feedback Wire:

Color	Pin	Define	Color	Pin	Define
RED	pin1	+5V	BLU/WHT	pin9	H3+
BLK	pin2	GND	ORG/WHT	pin10	H2+
	pin3		YEL/WHT	pin11	I-
BRW/WHT	pin4	H1+	GRY/WHT	pin12	B-
BRW	pin5	H1-	GRN	pin13	A-
YEL	pin6	I+	BLU	pin14	H3-
GRY	pin7	B+	ORG	pin15	H2-
GRN/WHT	pin8	A+	CASE	SHIELD	



NUMBER OF PHASE	绕组相数	3	Wires for phase			
NUMBER OF POLES	极数	8	PHASE U	PHASE V	PHASE W	PE
LINE TO LINE RESISTANCE	线电阻	0.25±10% ohms@20°C	YEL	RED	BLK	YEL/GRN
LINE TO LINE INDUCTANCE	线电感	0.53±20% mH@1kHz	Feedback info			
NOMINAL VOLTAGE	额定电压	48 VDC	Feed back device	2500p/rev incremental encoder		
NO LOAD SPEED	空载转速	5000±10% RPM	<p>PERMISSIBLE RADIAL+AXIAL FORCE</p>			
NO LOAD CURRENT	空载电流	0.8 A				
RATED TORQUE	额定转矩	1.27N.m				
RATED SPEED	额定转速	3000 RPM				
RATED CURRENT	额定电流	11.8A				
PEAK TORQUE	峰值扭矩	3.81N.m				
PEAK CURRENT	峰值电流	35.6A				
BACK EMF CONSTANT	反电势常数	6.5 Vrms/kRPM				
TORQUE CONSTANT	转矩常数	0.107N.m/A				
INSULATION CLASS	绝缘等级	B 130°C				
DIELECTRIC STRENG	介电强度	600VAC 1SEC				
INSULATION RESIST	绝缘电阻	100MΩhm @500VDC				
ROTOR INERTIA	转子转动惯量	0.43Kg.cm ²				
WEIGHT	重量	1.4Kg				
OPERATION AMBIENT	使用环境	Ambient temperature: -20...+55°C, humidity Max. 85% (No condensation)				
STORAGE AMBIENT	存储环境	Ambient temperature: -10...+35°C, humidity Max. 85% (No condensation)				
AXIAL-FORCE	轴向压力	Fa= 98 N Max.				
DISTANCE	距离	a=10 mm				
RADIAL-FORCE	径向压力	Fr= 245 N Max.				
SHAFT RADIAL PLAY	径向间隙	0.02 mm Max. @4N				
SHAFT AXIAL PLAY	轴向间隙	0.08mm Max. @4N				

A	DESIGN	DATE	P/N.
REV	ECN NO.		
UNLESS OTHERWISE SPECIFIED TOLERANCES:		DESCRIPTION	TITLE
DECIMALS:	ANGULAR:	MATERIAL	SPECIFICATION
.X ±0.5	±0°30'	CONTR.	USED ON
.XX ±0.25		CHECK	FL60SV40
.XXX ±0.1		APPD	DWG NO.
UNIT: mm	FIRST ANGLE PROJECTION	SCALE	REV
DO NOT SCALE DRAWING		SHEET OF	A
			FULLING MOTOR