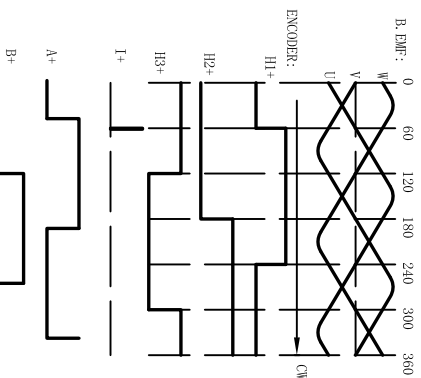


NUMBER OF PHASE	3	Wires for phase	PHASE U	PHASE V	PHASE W	PE
NUMBER OF POLES	8		YEL	RED	BLK	YEL/GRN
LINE TO LINE RESISTANCE	0.069±10% ohms@20°C		Feedback info			
LINE TO LINE INDUCTANCE	0.42±20% mH@1kHz		2500p/rev Incremental encoder			
NOMINAL VOLTAGE	60 VDC		PERMISSIBLE RADIAL+AXIAL FORCE			
NO LOAD SPEED	4500±10% RPM		SPRING WASHER			
NO LOAD CURRENT	0.8 A		BEARING			
RATED TORQUE	3N.m		F _a = 315 N Max.			
RATED SPEED	3000 RPM		DISTANCE			
RATED CURRENT	18.4A		RADIAL-FORCE			
PEAK TORQUE	9N.m		FR			
PEAK CURRENT	55.2 A		F _r = 630 N Max.			
BACK EMF CONSTANT	9.9 Vrms/kRPM		SHAFT RADIAL PLAY			
TORQUE CONSTANT	0.163N.m/A		SHAFT AXIAL PLAY			
INSULATION CLASS	B/130°C		AXIAL-FORCE			
DIELECTRIC STRENGTH	600VAC 1SEC		DISTANCE			
INSULATION RESIST	100MΩm @50VDC		RADIAL-FORCE			
ROTOR INERTIA	4.351g.cm ²		SHAFT RADIAL PLAY			
WEIGHT	4.8Kg		SHAFT AXIAL PLAY			
OPERATION AMBIENT	Ambient temperature: -20...+55°C, humidity Max. 85% (No condensation)		STORAGE AMBIENT			
STORAGE AMBIENT	Ambient temperature: -10...+35°C, humidity Max. 85% (No condensation)					

Front shaft CW rotate
View to front shaft



Feedback Wire:

Color	Pin	define	Color	Pin	define
RED	pin1	+5V	BLU/WHI	pin9	H3+
BLK	pin2	GND	ORG/WHI	pin10	H2+
	pin3		YEL/WHI	pin11	I-
BRW/WHI	pin4	H+	GRV/WHI	pin12	B-
BRW	pin5	H1-	GRN	pin13	A-
YEL	pin6	I+	BLU	pin14	H3-
GRY	pin7	B+	ORG	pin15	H2-
GRN/WHI	pin8	A+	CASE	SHIELD	

30015
000
000
000
000
1811

DB 15M

REV	EQN NO	DESCRIPTION	CONTR.	CHECK	DATE	P/N.
UNLESS OTHERWISE SPECIFIED						
TOLERANCES:						
DECIMALS:						
.X ±0.5						
.XX ±0.25						
.XXX ±0.1						
UNIT: mm						
DO NOT SCALE DRAWING						
FIRST ANGLE PROJECTION						
DESIGN			DATE			
CHECK			TITLE			
APPD			USED ON			
			DWG NO.			
			REV			
			A			
SCALE			SHEET OF			
FULLING MOTOR						