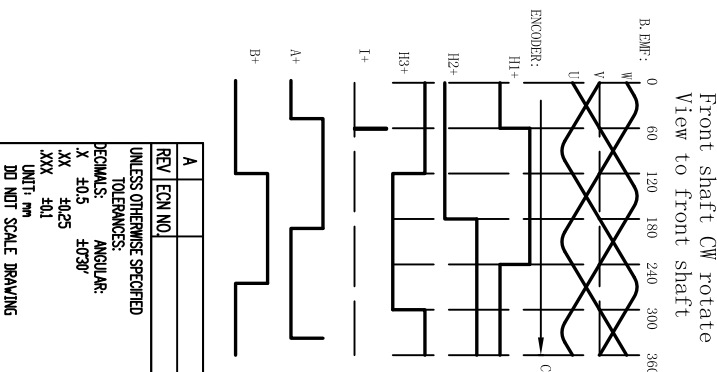


NUMBER OF PHASE	3	PHASE U	PHASE V	PHASE W	PE																																																								
NUMBER OF POLES	8	YEL	RED	BLK	YEL/GRN																																																								
LINE TO LINE RESISTANCE	0.046±10% ohms@20°C	Feedback info																																																											
LINE TO LINE INDUCTANCE	0.283±20% mH@1KHz	2500p/rev Incremental encoder																																																											
NOMINAL VOLTAGE	60 VDC	PERMISSIBLE RADIAL/AXIAL FORCE																																																											
NO LOAD SPEED	4500±10% RPM																																																												
NO LOAD CURRENT	0.8 A	AXIAL-FORCE																																																											
RATED TORQUE	4.5Nm	DISTANCE																																																											
RATED SPEED	3000 RPM	RADIAL-FORCE																																																											
RATED CURRENT	30A	SHAFT RADIAL PLAY																																																											
PEAK TORQUE	13.5Nm	SHAFT AXIAL PLAY																																																											
PEAK CURRENT	90 A																																																												
BACK EMF CONSTANT	9.1 Vrms/kRPM	<table border="1"> <tr> <td>REV</td> <td>ECN NO</td> <td>DESCRIPTION</td> <td>CONTR.</td> <td>CHECK</td> <td>DATE</td> <td>P/N.</td> </tr> <tr> <td colspan="7">UNLESS OTHERWISE SPECIFIED</td> </tr> <tr> <td colspan="7">TOLERANCES:</td> </tr> <tr> <td colspan="7">DECIMALS: ANGULAR:</td> </tr> <tr> <td colspan="7">.XX ±0.25</td> </tr> <tr> <td colspan="7">.XXX ±0.1</td> </tr> <tr> <td colspan="7">UNIT: mm</td> </tr> <tr> <td colspan="7">DD NOT SCALE DRAWING</td> </tr> </table>				REV	ECN NO	DESCRIPTION	CONTR.	CHECK	DATE	P/N.	UNLESS OTHERWISE SPECIFIED							TOLERANCES:							DECIMALS: ANGULAR:							.XX ±0.25							.XXX ±0.1							UNIT: mm							DD NOT SCALE DRAWING						
REV	ECN NO	DESCRIPTION	CONTR.	CHECK	DATE	P/N.																																																							
UNLESS OTHERWISE SPECIFIED																																																													
TOLERANCES:																																																													
DECIMALS: ANGULAR:																																																													
.XX ±0.25																																																													
.XXX ±0.1																																																													
UNIT: mm																																																													
DD NOT SCALE DRAWING																																																													
TORQUE CONSTANT	0.15Nm/A	FIRST ANGLE PROJECTION																																																											
INSULATION CLASS	B 130°C	DESIGN																																																											
DIELECTRIC STRENG	600VAC 1SEC	DATE																																																											
INSULATION RESIST	100MΩm @50VDC	TITLE																																																											
ROTOR INERTIA	5.8Kg·cm ²	USED ON																																																											
WEIGHT	5.6Kg	DWG NO.																																																											
OPERATION AMBIENT	Ambient temperature: -20...+55°C, humidity Max. 85% (No condensation)	SCALE																																																											
STORAGE AMBIENT	Ambient temperature: -10...+35°C, humidity Max. 85% (No condensation)	SHEET OF																																																											



Feedback Wire:

Color	Pin	define	Color	Pin	define
RED	pin1	+5V	BLU/WH	pin9	H3+
BLK	pin2	GND	ORG/WH	pin10	H2+
	pin3		YEL/WH	pin11	I-
BRW/WH	pin4	H+	GRV/WH	pin12	B-
BRW	pin5	H1-	GRN	pin13	A-
YEL	pin6	I+	BLU	pin14	H3-
GRY	pin7	B+	ORG	pin15	H2-
GRN/WH	pin8	A+	CASE	SHIELD	

3005
000
000
000
000
1811
DB 15M

DESIGN	DATE	P/N.
CHECK		TITLE
APPD		USED ON
		DWG NO.
		REV
		A

FULLING MOTOR